

**MAXIS – FIBER TO THE HOME (FTTH)  
Fiber Distribution Panel (FDC) Installation**

Supplier- THREE-OPP (M) SDN BHD



## BANDAR UTAMA FDC INSTALLATION



1. FDC at Damansara



2. FDC before installing adapters and splitters



3. Checking each panel



4. Installing adapters



5. Finalizing adapters installation



5. Completion of adapter installation



6. Placing Laser Warning Label



7. Placing 3-Opt Label inside cabinet

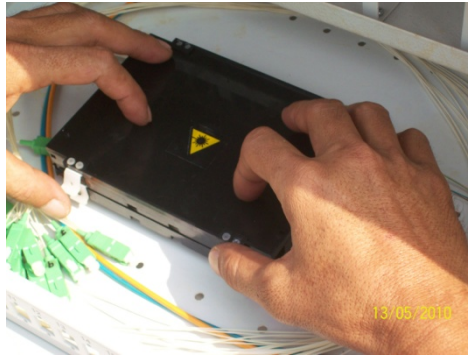


8. After installing splitters

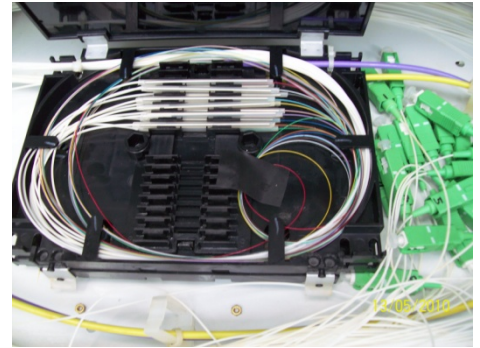
## SIERRAMAS FDC INSTALLATION



1. FDC at Sierramas



2. Checking trays and splicing



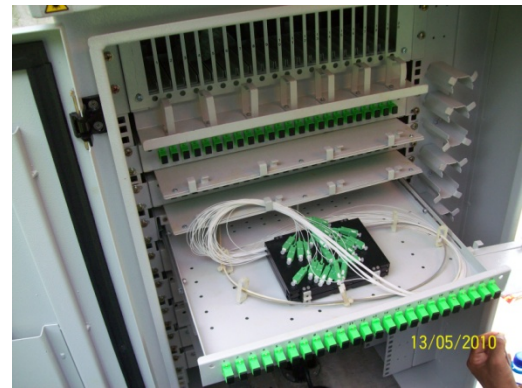
3. Pigtail and tray inside SC 24 core panel



4. Installing adapters



5. Finalizing adapters installation



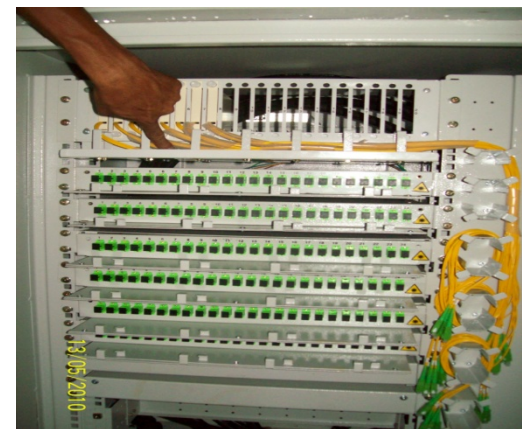
6. Completion of adapter installation



7. Installing splitters



8. Proper arrangement of cables  
using spiral



8. After complete installation of  
splitters and adapters

## SRI HARTAMAS FDC INSTALLATION



1. FDC at Bandar Utama



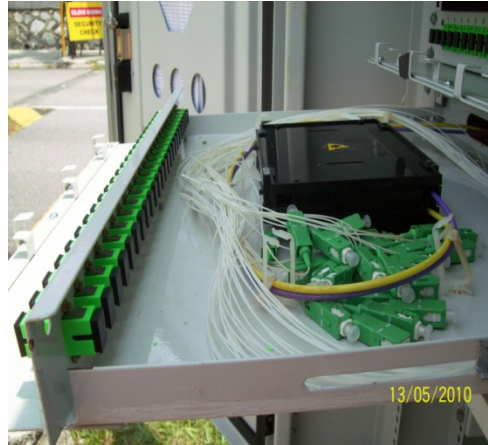
2. SC 24 core panel before installing adapters and splitters



3. Checking and correcting the tray



4. Installing adapters



5. Completion of adapter installation



6. Installing splitters



7. Finalizing splitters cable arrangement



8. Placing MAXIS and 3-Opp Label



9. Complete installing FDC



**LIST OF NAME INSTALING FDC AT SRI HARTAMAS, SIERRAMAS AND BANDAR UTAMA**

1. Mr Haniffa
2. Ms Rani
3. Pandian
4. Aris
5. Khairol
6. Muhammad Firdaus- Trainee from IIUM
7. Mohd Yusof
8. Sharizan

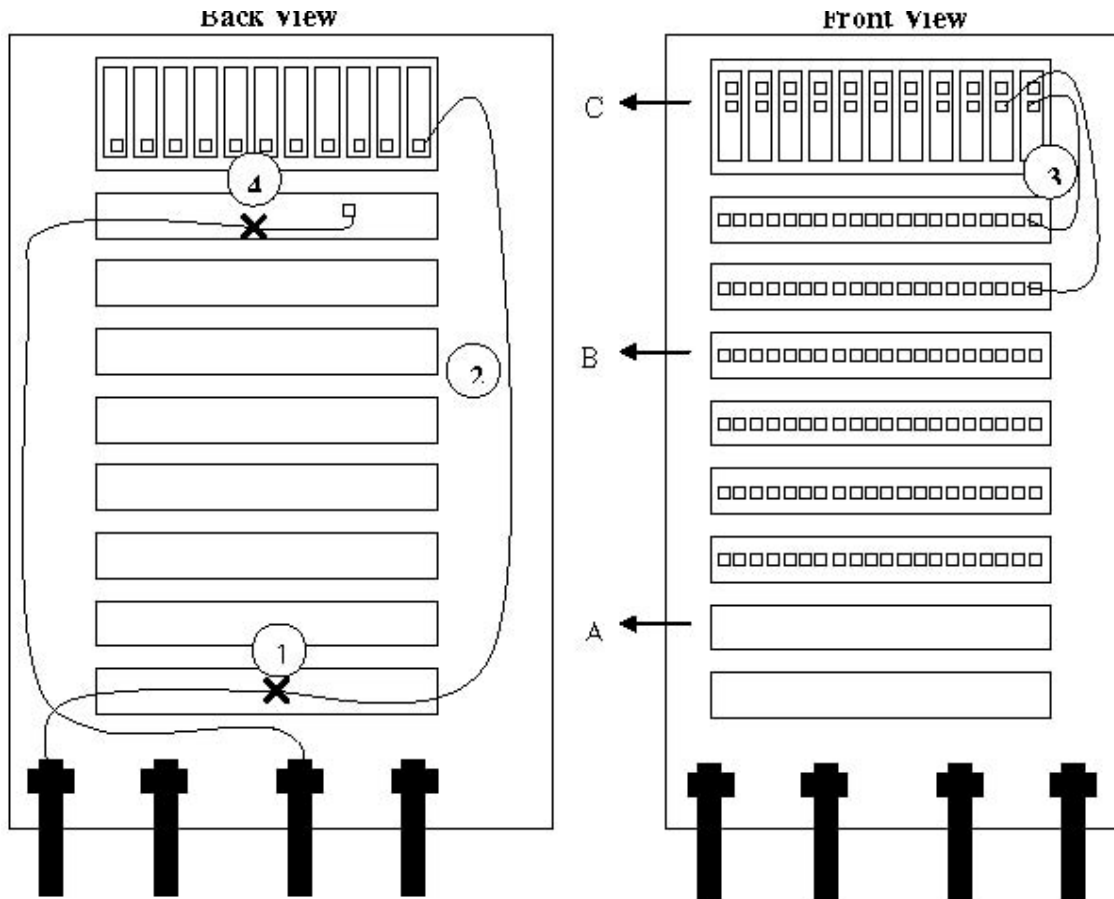
## Fiber Distribution Cabinet (FDC)



### Bill of Quantity

ACCESSORIES	QUANTITY (pcs)		
	BANDAR UTAMA	SIERRAMAS	SRI HARTAMAS
E-Side Tray	2	2	2
D-Side Tray (24C)	6	6	6
Splitter Slot	1	1	1
Splice Tray	16	16	16
Strength Member	8	8	8
Cable Gland	8	8	8
Saddle Clip	48	48	48
SC/APC Adapter	144	144	144
Cable Trunking	1	1	1
Maxis Logo Sticker	1	1	1
Laser warning Sticker	10	10	10
Splitter 1x4	6	8	5
Splitter 1x2	-	-	2

**Installation Diagram**



1. Splice E-Side Cable to the SC/UPC pigtail in E-Side tray
2. Patch SC/APC pigtail to the input splitter.
3. Patch output splitter to the SC adaptor at D-Side tray
4. Splice SC/APC pigtail to the D-Side Cable in D-Side tray.

A = E-Side Tray  
B = D-Side Tray  
C = Splitter Shelf

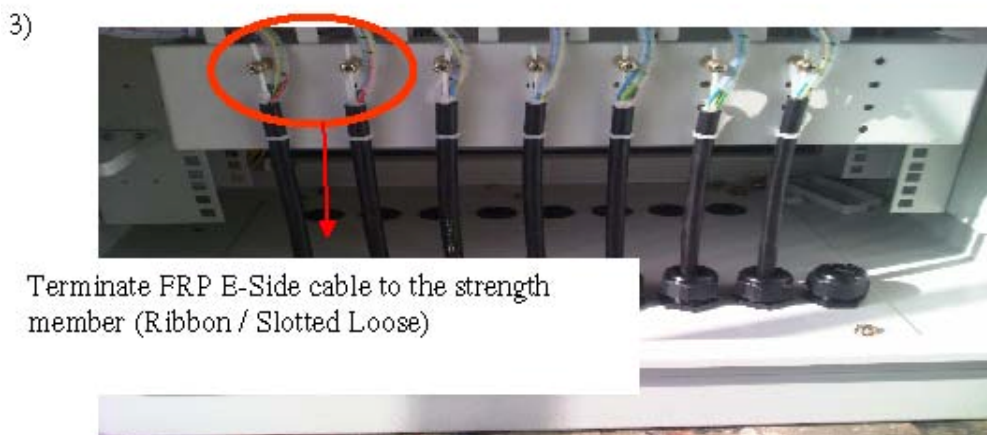
## Installation of the E-Side Cable to the Splitter Side



E-Side Cable coming from the bottom (plinth)



Incoming E-Side Cable



Terminate FRP E-Side cable to the strength member (Ribbon / Slotted Loose)

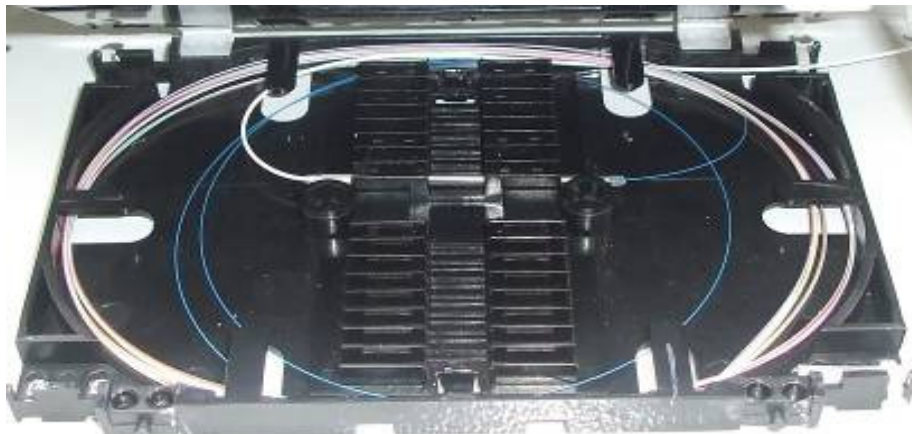


4)



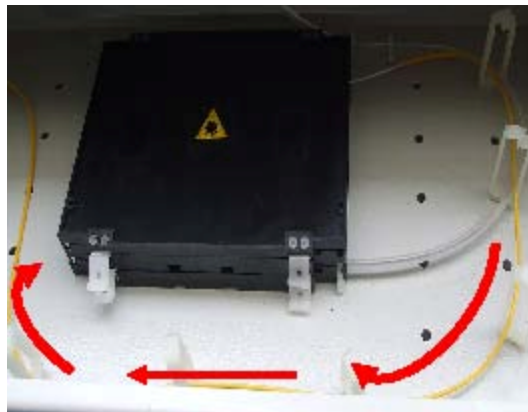
Used trunk cable to guide the fibre into the splice tray.

5)



Splice the E-Side fiber with SC/APC pigtail .

6)



Manage the extra pigtail using the guide and patch to the input splitter at splitter shelf.

## Installation of the Splitter at splitter slot

1)



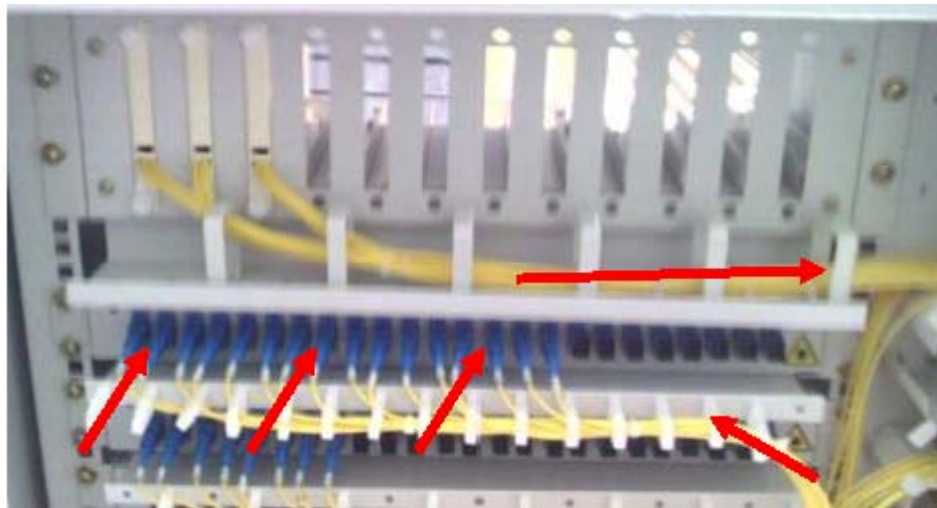
Slot the Splitter Module at the Splitter Slot

2)



Lock the module

3)



Patch the output splitter connector to the SC/APC adapter

## Installation of the D-Side Cable from the Splitter Side

1)



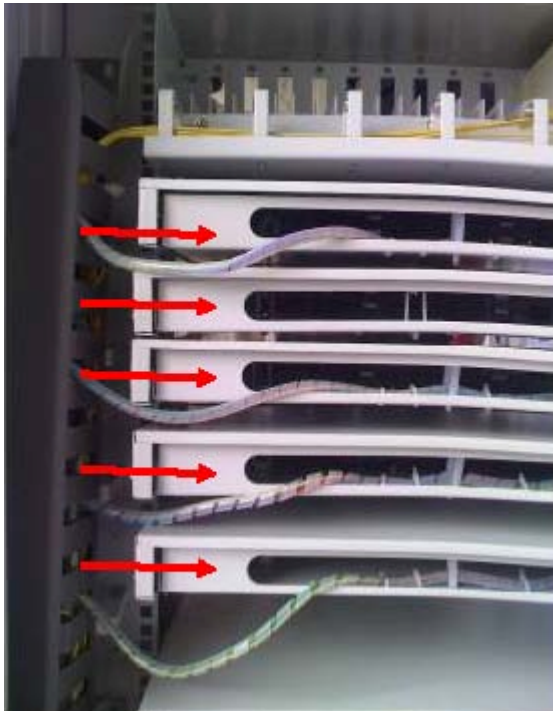
Pull the D-Side cable from the bottom (plinth)

2)



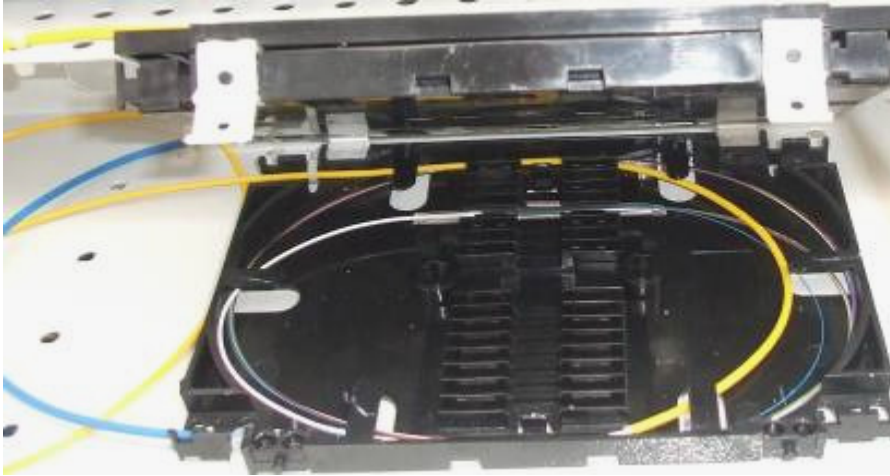
Terminate FRP to the strength member (Ribbon / Slotted Loose)

3)



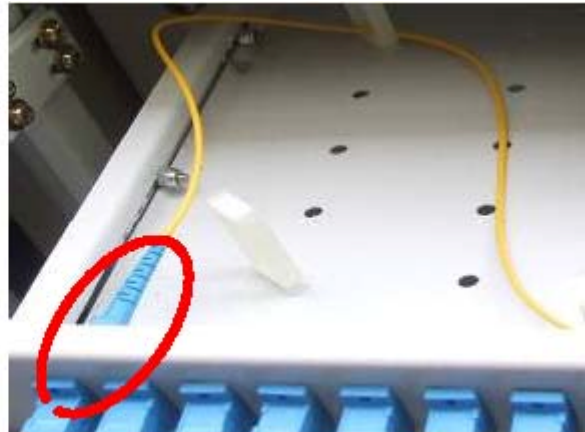
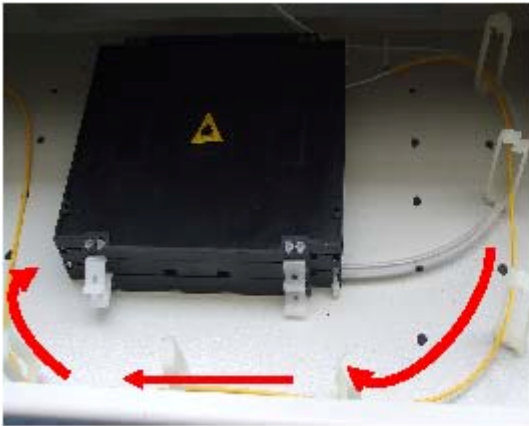
Pull the loose tube fibre to the D-Side Termination Tray

5)



Splicing the fibre loose tube with pig tail and manage the extra fibre inside the splice tray.

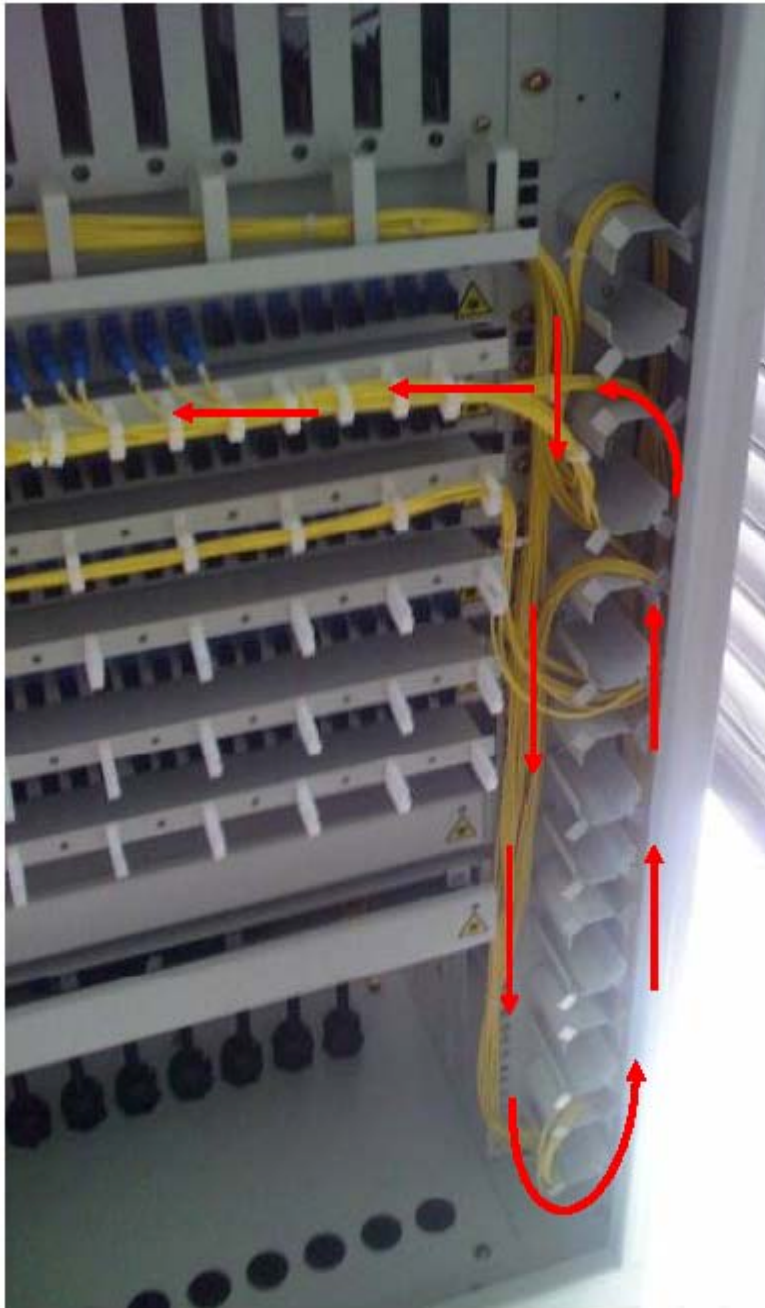
6)



Manage the pigtail outside the splice tray using the fibre guide. Patch to the SC/APC adapters are provided.

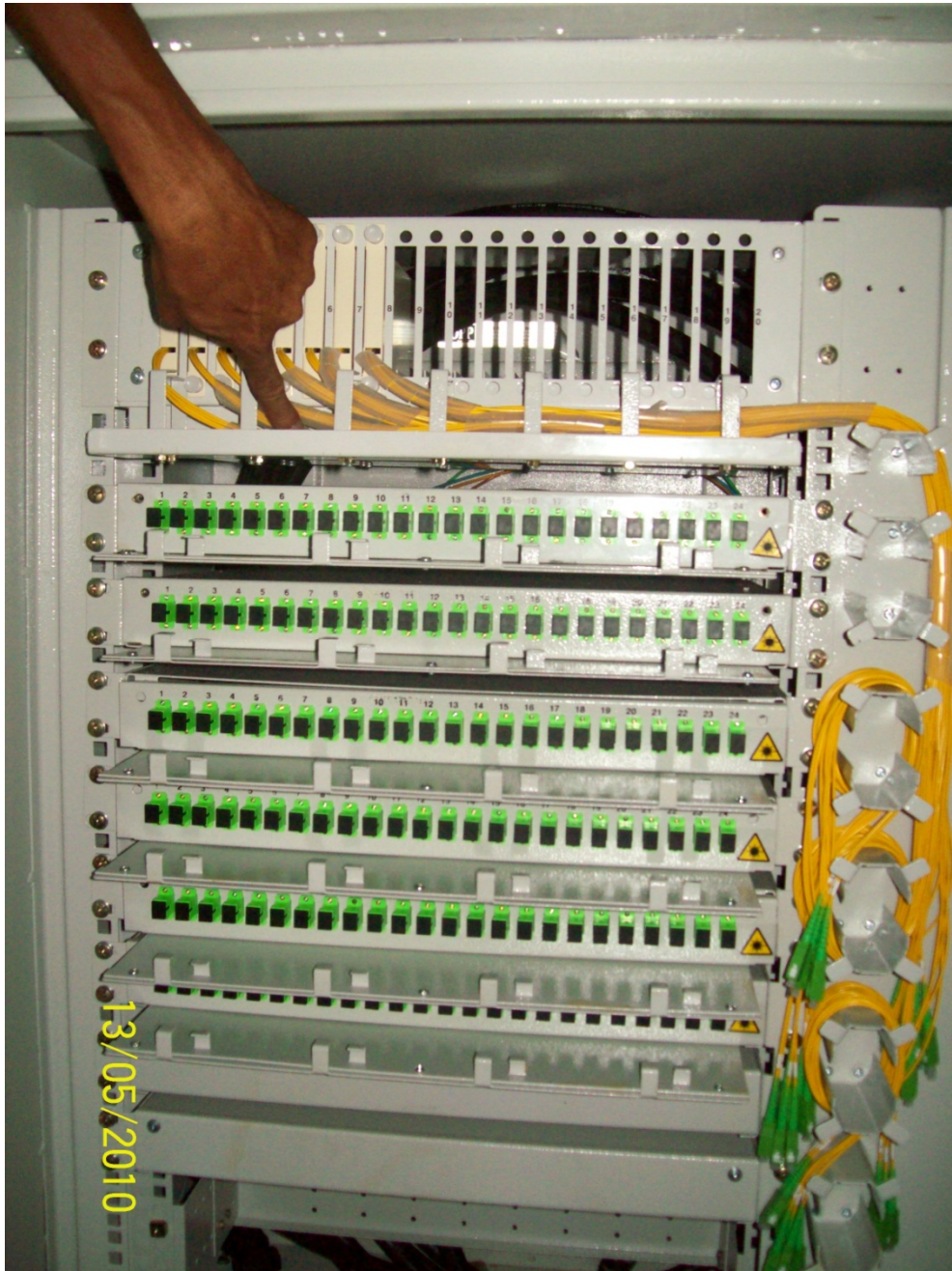
## Installation of the Patch Cord to the D-Side Cable

1)



Patch the patch cord from the splitter output and manage the patch cord cable using the fibre routing.

## Fiber Distribution Cabinet – 144 Termination



Front View

**Fiber Distribution Cabinet – 144 Termination**



Rear View